

Welcome to STF/IYHF Hostel Hågelby!

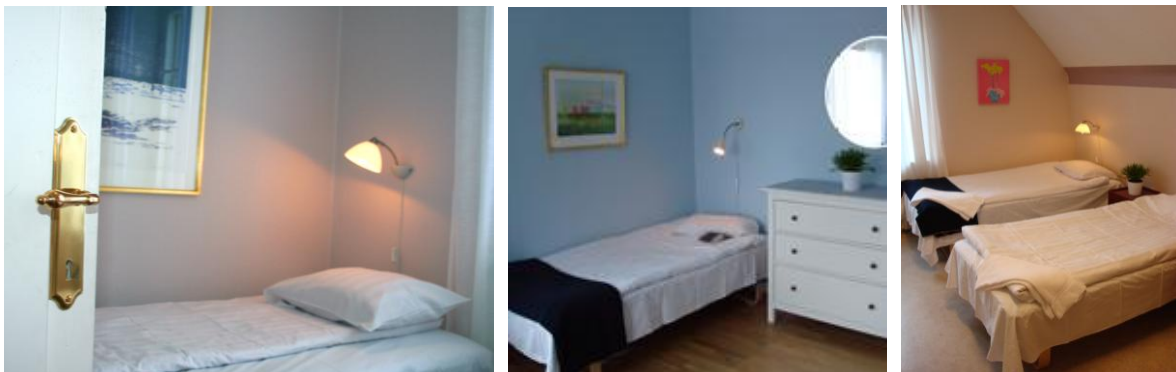


Hågelbyparken, with a view of lake Aspen, is one of Sweden's most beautiful parks with natural surroundings near Tumba town and Stockholm. Plenty of room for children to play in the park and rooms for pets, conference-rooms, 4H-farm with animals, café, dance evenings and other big events like the Swedish National day and Midsummer celebrations.

The Hostel has 28 beds divided in 7 rooms. The reception is in the main-building and is open weekdays 08.00-16.00. Weekends and holidays the reception is closed. If you arrive later than 16.00 please contact the reception to receive the entrance code for the hostel, phone +46 8 -599 07 100 or hagelbyparken@hagelby.se

We are situated 20 km south of Stockholm city

Take the train to Tumba or the subway to Alby and catch bus 707/708 to the station called "Hågelby". By car, choose road 258 from E4/E20 or Tumba. You will find the hostel opposite Klockhuset and café Anna Giertz.



HågelbyParken

EN MÖTESPLATS FÖR ALLA SINNEN!